

# CONTENTS

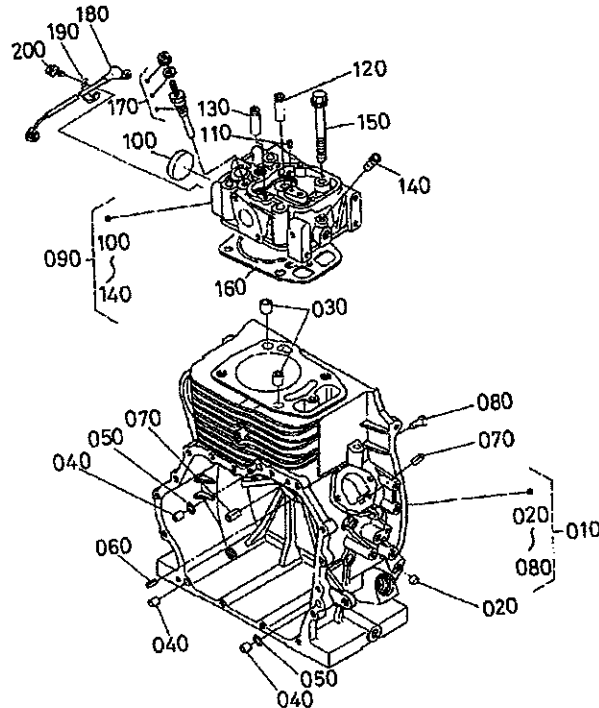
---

[0C95-E2-D1-Q]

0001	CRANKCASE AND CYLINDER HEAD (D) .....	1
0003	CRANK CASE COVER (D) .....	2
0005	OIL PUMP AND OIL FILTER .....	3
0006	FAN COVER (D) .....	4
0100	CAMSHAFT (D) .....	5
0102	PISTON, CRANKSHAFT (D) .....	6
0200	GOVERNOR .....	7
0203	FUEL TANK AND FUEL FILTER .....	8
0204	SPEED CONTROL .....	9
0206	INJECTION PUMP .....	10
0208	NOZZLE HOLDER (COMPONENT PARTS) .....	11
0300	FLYWHEEL (D) .....	13
0302	STARTER (COMPONENT PARTS) .....	14
0400	ROCKER ARM AND VALVE .....	15
0401	AIR CLEANER .....	17
0402	MUFFLER .....	18
0600	OIL COOLER .....	19
0700	ACCESSORIES AND SERVICE PARTS .....	20
■	NUMERICAL INDEX .....	21

0001

CRANKCASE AND CYLINDER HEAD (D)  
 CARTER MOTEUR ET CULASSE (D)  
 KURBELGEHAUSE UND ZYLINDERKOPF (D)



10371-001-10

A:0C95-E2-D1-Q

REF. No. POS. No. BILD-Nr.	PART No. REFERENCE BESELL-Nr.	PART NAME	DESIGNATION	BEZEICHNUNG	Q'TY/S. No. Q'TE/No. S. STUECK/S. Nr.		I. C.	REMARKS REMARQUES BEMERKUNGEN
					A	B		
010	11460-0101-3	COMP. CRANKCASE	BLOC MOTEUR COMPLET	KOMP. KURBELGEHAUSE	1	-		
020	14301-3363-0	PLUG, PIN	BOUCHON	STOEPSSELSTIFT	1	-		
030	11460-9493-0	PIN, PIPE	GICLEUR	ROHRSTIFT	2	-		
040	11460-9494-0	PIN, PIPE	GICLEUR	ROHRSTIFT	3	-		
050	04816-00100	O RING	JOINT TORIQUE	O RING	2	-		
060	05411-00308	PIN, SPRING	GOUPILLE-RESSORT	STIFT, FEDR	2	-		
070	05411-00510	PIN, SPRING	GOUPILLE-RESSORT	STIFT, FEDR	2	-		
080	14107-6629-0	PIN	GOUPILLE	STIFT	1	-		
090	16141-0300-0	ASSY CYLINDER HEAD	ENS. CULASSE	GRP. ZYLINDERKOPF	1	-		
100	15221-0349-0	CAP, SEALING	PASTILLE	STOEPSSEL, ABDICHTUNG	1	-		
110	05411-00410	PIN, SPRING	GOUPILLE-RESSORT	STIFT, FEDR	1	-		
120	16261-1354-0	GUIDE, INLET VALVE	GUIDE SOUP. D'ADMISS.	EINLASSVENTILFUHRUNG	1	-		
130	16261-1356-0	GUIDE, EXHAUST VALVE	GUIDE SOUP. D'ECHAP.	AUSLASSVENTILFUHRUNG	1	-		
140	11460-3712-0	JOINT, OIL TUBE	RACCORD DE TOYAU	VERBINDUNGSSTUECK	1	-		
150	11460-0345-0	BOLT, CYLINDER HEAD	VIS DE CYLINDRE	ZYLINDERKOPFSCHRAUBE	4	-		
160	11460-0331-0	GASKET, CYLINDER HEAD	JOINT	DICHTUNG, ZYLINDERKOPF	1	-		
170	16241-6551-0	GLOW PLUG	BOUGIE, PRE-CHAUFFAGE	GLUEHSTOEPSSEL	1	-		
180	11420-6556-0	CORD, GLOW PLUG	FILDEBOUG, PRECHAUFF.	GLUEHKERZEKORD	1	-		
190	15241-6758-0	CLAMP, CORD	ATTACHE-FILS	KABELKLEMME	1	-		
200	01023-50610	BOLT	VIS	BOLZEN	1	-		

↔ Interchangeable; ≠ not interchangeable; ← new or old; → old or new

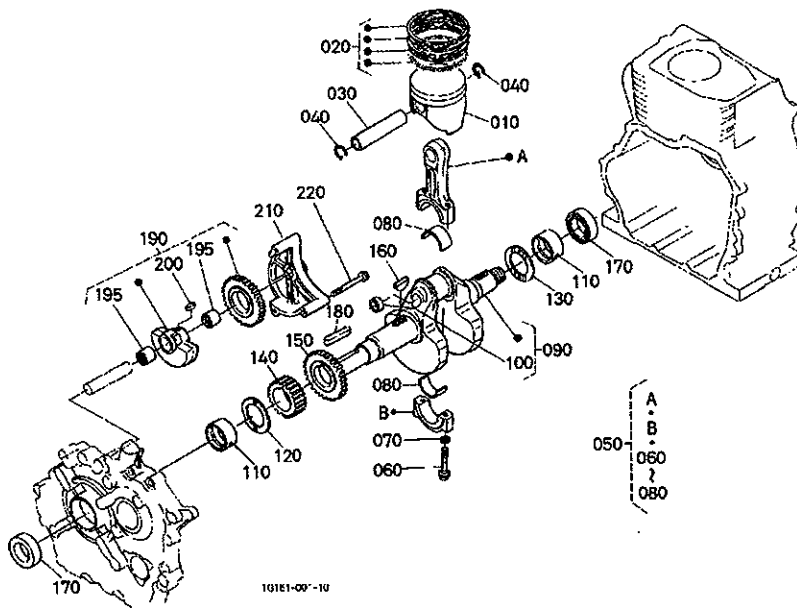








# 0102 PISTON, CRANKSHAFT (D) PISTONS ET VILEBREQUIN (D) KOLBEN-KURBEL WELLE (D)



A:0C95-E2-D1-Q

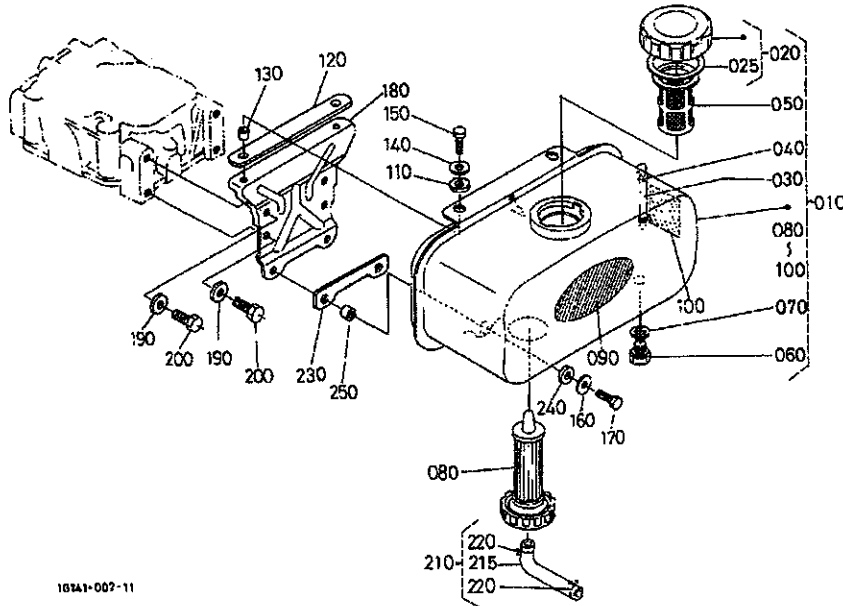
REF. No. FIG. No. BILD-Nr.	PART No. REFERENCE BESELL-Nr.	PART NAME	DESIGNATION	BEZEICHNUNG	QTY'S. No. Q' TE/No. S. STUECK/S. Nr.		I. C.	REMARKS REMARKES BEMERKUNGEN
					A	B		
010	11460-2111-0	PISTON	PISTON	KOLBEN	1	-		STD
010	11460-2191-0	PISTON	PISTON	KOLBEN	1	-		+0.25mm
020	11460-2105-0	ASSY PISTON RING	ENS. SEGMENT	GRP. KOLBENRING	1	-		STD
020	11460-2109-0	ASSY PISTON RING	ENS. SEGMENT	GRP. KOLBENRING	1	-		+0.25mm
030	15521-2131-0	PIN, PISTON	AXE DE PISTON	KOLBENBOLZEN	1	-		
040	15221-2133-0	CIR CLIP, PISTON PIN	CIR CLIP	SEEGERING	2	-		
050	11461-2201-3	ASSY ROD, CONNECTING	ENS. BIELLE	TRIEBSTANGE KOMP	1	-		
060	11460-2214-0	BOLT, CONNECTING ROD	VIS DE BIELLE	BOLZEN	2	-		
070	11460-2217-0	WASHER, CONNECT. ROD	RONDILLE FREIN	SCHEIBE	2	-		
080	11460-2231-0	METAL, CRANKPIN	COUSSINET DE BIELLE	METALLTEIL, KUBELZAP.	1	-		STD SET
080	11460-2296-0	METAL, CRANKPIN	COUSSINET DE BIELLE	METALLTEIL, KUBELZAP.	1	-		-0.25mm SET
090	11462-2301-2	COMP. CRANKSHAFT	VILEBREQUIN COMPLET	KOMP. KURBELWELLE	1	-		
100	06311-85022	CAP. SEALING	PASTILLE	STOEPSSEL, ABDICHTUNG	1	-		
110	11460-2347-0	METAL, CRANKSHAFT	COUSSINET DE VILEBR.	METALLTEIL	2	-		STD
110	11460-2386-0	METAL, CRANKSHAFT	COUSSINET DE VILEBR.	METALLTEIL	2	-		-0.25mm
120	11460-2353-0	METAL, SIDE	COUSSINET DE LATERAL	METALLSEITENRING	1	-		STD
120	11460-2395-0	METAL, SIDE	COUSSINET DE LATERAL	METALLSEITENRING	1	-		+0.25mm
130	11460-2354-0	METAL, SIDE	COUSSINET DE LATERAL	METALLSEITENRING	1	-		STD
130	11460-2397-0	METAL, SIDE	COUSSINET DE LATERAL	METALLSEITENRING	1	-		+0.25mm
140	11460-2411-0	GEAR, CRANKSHAFT	PIGNON DE VILEBREQ.	KURBELANTRIEBSTEIL	1	-		
150	11460-2644-0	GEAR, BALANCER	PIGNON DE BALANCIER	GETRIEBE, SCHWINGE	1	-		
160	05811-00522	KEY, WOODRUFF	CLAVETTE WOODRUFF	SCHLEIBEN-KEIL	1	-		
170	11460-2355-0	SEAL OIL	BAGUE JOINT	OEILDICHTUNGSRING	2	-		
180	12967-9501-0	KEY, FEATHER	CLAVETTE	KEIL	1	-		
190	11460-2630-0	COMP BALANCER	BALANCIER COMPLET	SCHWINGE KOMP.	1	-		
195	11460-2628-0	BEARING, NEEDLE	ROULEMENT A AIGUILLE	NADELLAGER	1	-		
200	13662-9503-0	KEY, FEATHER	CLAVETTE	KEIL	1	-		
210	11460-2621-0	CASE, BALANCER	GARTER	GEHAEUSEBILANZ	1	-		
220	01754-50660	BOLT, FLANGE	VIS DE BUTEE	FLANSCHEN-BOLZEN	3	-		

← Interchangeable: ≠ not interchangeable: ← new for old: → old for new



0203

FUEL TANK AND FUEL FILTER  
RESERVOIR A CARBURANT ET FILTRE A CARBURANT  
KRAFTSTOFFTANK UND KRAFTSTOFFFILTER



10341-007-11

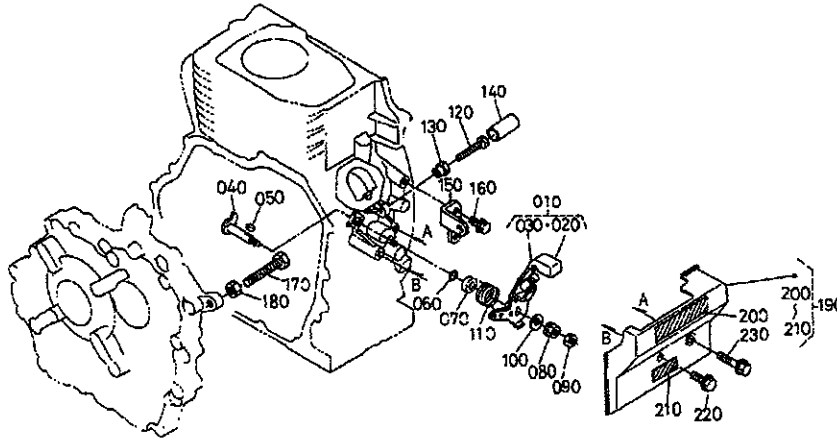
A:0C95-E2-D1-Q

REF. No. POS. No. BILD-Nr.	PART No. REFERENCE BESELL-Nr.	PART NAME	DESIGNATION	BEZEICHNUNG	Q'TY/No. of PIECE/No. S. STUECK/No. S.		I. C.	REMARKS REMARQUES BEMERKUNGEN
					A	B		
010	11462-4102-0	ASSY TANK, FUEL	RESERVOIR A CARBURANT	KRAFTSTOFFBEHAELTER	1	-		
020	11420-4103-0	ASSY CAP, FUEL TANK	BOUCHON DE RESERVOIR	GRP. TANKVERSCHLUSS	1	-		
025	13901-4134-0	PACKING, FUEL TANK	JOINT	DICHTUNGSSCHNUR	1	-		
030	11151-4171-0	GAUGE, FUEL	JAUGE A CARB	TREIBSTOFFANZEIGE	1	-		
040	14301-4238-0	CLIP	ATTACHE	SCHELLE	2	-		
050	13901-4135-0	FILTER, FUEL	FILTRE A CARBURANT	KRAFTSTOFFFILTER	1	-		
060	13901-3375-0	PLUG, DRAIN	BOUCHON DE VIDANGE	ENTLEERUNGSTOPFEN	1	-		
070	04724-00120	GASKET	JOINT	DICHTUNGSPLATTE	1	-		
080	11460-4301-2	ASSY FILTER, FUEL	FILTRE A COMBUSTIBLE	KRAFTSTOFFFILTER	1	-		
080	11461-4302-2	ASSY FILTER, FUEL PBT	FILTRE A COMBUSTIBLE	KRAFTSTOFFFILTER	1	-		OPTION
090	11420-8785-2	LABEL	ETIQUETTE	AUFKLEBER	1	-		
100	11520-8821-0	LABEL, CAUTION	ETIQUETTE	AUFKLEBER, ACHTUNG	1	-		
110	11151-7732-0	CUSHION, RUBBER	COUSSIN	BUFFER, GUMMI	2	-		
120	11460-4141-0	CUSHION, RUBBER	COUSSIN	BUFFER, GUMMI	1	-		
130	11151-4144-0	COLLAR, A	COLLIER A	HUELSE, A	2	-		
140	04015-60060	WASHER, PLAIN	RONDELLE FREIN	SCHEIBE	2	-		
150	01053-50620	BOLT	VIS	BOLZEN	2	-		
160	11151-7738-0	WASHER, PLAIN	RONDELLE FREIN	SCHEIBE	2	-		
170	01153-50820	BOLT	VIS	BOLZEN	2	-		
180	11460-4113-0	SUPPORT, FUEL TANK	SUP. RESERV. A CARBUR	TRAEGER	1	-		
190	11420-4137-0	WASHER	RONDELLE	SCHEIBE	4	-		
200	01153-50818	BOLT	VIS	BOLZEN	4	-		
210	11420-4201-0	ASSY PIPE, FUEL	ENS. TUYAU CARBURANT	GRP. KRAFTSTOFFROHR	1	-		
215	11420-4211-0	PIPE, FUEL	TUYAU DE COMBUSTIBLE	KRAFTSTOFFROHR	1	-		
220	14911-4275-0	CLIP, PIPE	ATTACHE	ROHRKLENNE	2	-		
230	11460-4142-0	CUSHION	COUSSIN	KISSEN	1	-		
240	11151-7736-0	CUSHION, RUBBER	COUSSIN	BUFFER, GUMMI	2	-		
250	11151-7737-0	COLLAR, C	COLLIER C	HUELSE, C	2	-		

↔ Interchangeable: ≠ not interchangeable: ← new for old: → old for new

0204

**SPEED CONTROL  
LIMITE DE VITESSE  
DREHZAHL REGLER**



2-91-000-11

A:OC95-E2-D1-0

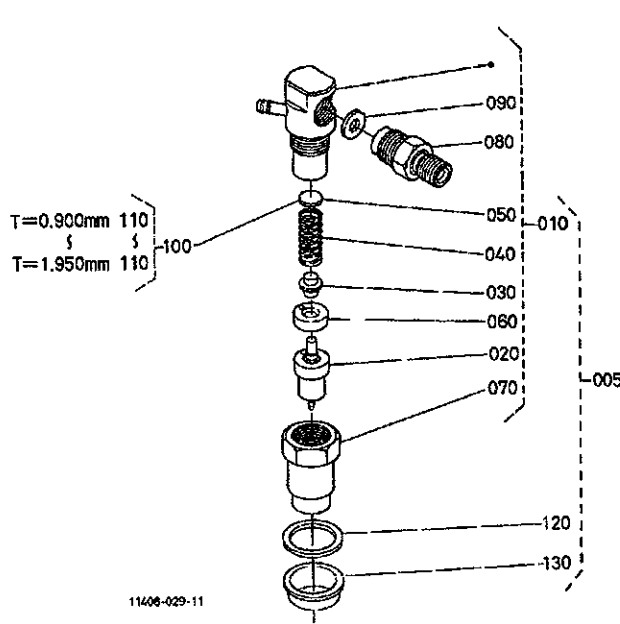
REF. No. POS. No. BILD-Nr.	PART No. REFERENCE BESELL-Nr.	PART NAME	DESIGNATION	BEZEICHNUNG	Q'TY/S. No. Q'TE/No. S. STUECK/S. Nr.		I. C.	REMARKS REMARQUES BEMERKUNGEN
					A	B		
010	11420-5704-3	ASSY LEVER, SP/CONT	ENS. LEVIER DE V-CON.	GRP. STEUERHEBEL	1	-		
020	11420-5705-3	COMP LEVER, SP/CONT	COMP. LEVIER CONTROLE	KOMP. STEUERHEBEL	1	-		
030	01222-50610	BOLT	VIS	BOLZEN	1	-		
040	11460-5723-0	COMP SHAFT, CON. LEVER	ENS. LEVIER COMMANDE	STEUERHEBEL KOMP	1	-		
050	15261-9501-0	KEY, FEATHER	CLAVETTE	KEIL	1	-		
060	04816-00070	O RING	JOINT TORIQUE	O RING	1	-		
070	15263-5738-0	PLATE, FRICTION, NA	PLATEAU DE FRICTION	REIBUNGSPLATTE	1	-		
080	02751-50060	NUT, FLANGE	ECROU A ENBASE	FLANSCHEN-MUTTER	1	-		
090	02056-50080	NUT	ECROU	MUTTER	1	-		
100	04013-60080	WASHER, PLAIN	RONDILLE FREIN	SCHEIBE	1	-		
110	11420-5654-0	SPRING, STOP	RESSORT, ARRET	SICHERUNGSRING	1	-		
120	01055-50635	BOLT	VIS	BOLZEN	1	-		
130	11151-5789-0	NUT, LOCK	CONTRE-ECROU	MUTTER	1	-		
140	16221-5442-0	CAP	BOUCHON	KAPPE	1	-		
150	11521-5744-0	HOLDER, RELEASE	SUPPORT DEGAGEMENT	HALTER	1	-		
160	01754-50612	BOLT, FLANGE	VIS DE BUTEE	FLANSCHEN-BOLZEN	2	-		
170	01155-50850	BOLT	VIS	BOLZEN	1	-		
180	02156-50080	NUT	ECROU	MUTTER	1	-		
190	11420-0480-4	COMP APRON, SIDE	TABLIER, COMP	ROLLBODEN	1	-		
200	11420-8755-0	LABEL, SPEED	ETIQUETTE	AUFKLEBER	1	-		
210	11420-8715-0	LABEL, STOP	ETIQUETTE	AUFKLEBER	1	-		
220	01754-50612	BOLT, FLANGE	VIS DE BUTEE	FLANSCHEN-BOLZEN	1	-		
230	01754-50630	BOLT, FLANGE	VIS DE BUTEE	FLANSCHEN-BOLZEN	1	-		

↔ Interchangeable; ≠ not interchangeable; ← new for old; → old for new



0208

**NOZZLE HOLDER (COMPONENT PARTS)**  
**INJECTEUR ET TUYAUTERIES (PARTIES COMPOSANTES)**  
**DUESENHALTER (EINZEL-TEIL)**

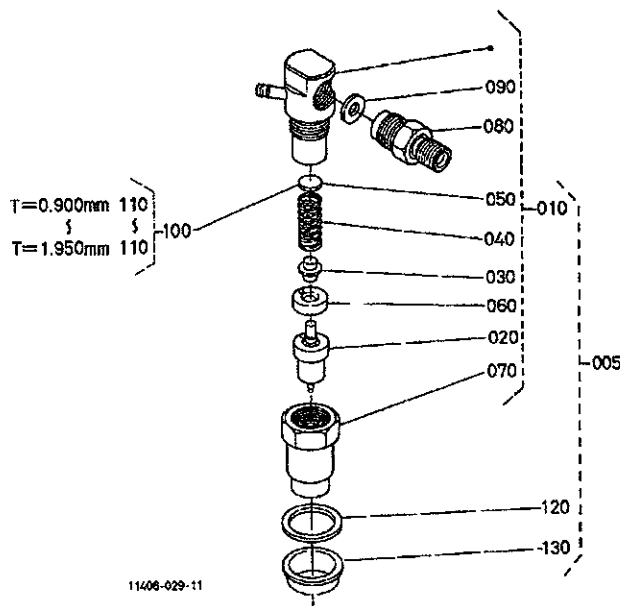


A:0C95-E2-D1-Q

REF. No. POS. No. BILD-Nr.	PART No. REFERENCE BESELL-Nr.	PART NAME	DESIGNATION	BEZEICHNUNG	Q'Y/S. No. Q'IE/No. S. STUECK/S. Nr.		I. C.	REMARKS REMARKES BEMERKUNGEN
					A	B		
005	16141-5390-0	KIT HOLDER, NOZZLE	ENS. PORTE-INJECTEUR	GRP. DUESENHALTER	1	-		#
010	16141-5300-0	ASSY HOLDER, NOZZLE	ENS. PORTE-INJECTEUR	GRP. DUESENHALTER	1	-		
020	11460-5361-0	PIEGE, NOZZLE	ELEMENT D'INJECTEUR	DUESENSTUECK	1	-		
030	15841-5316-0	PUSH ROD	TIGE DE POUSSOIR	STOSSELSTANGE	1	-		
040	15841-5317-0	SPRING, NOZZLE	RESSORT D'INJECTEUR	FEDER	1	-		
050	15841-5323-0	WASHER, ADJUSTING	RONDELLE DE REGLAGE	EINSTELLSCHEIBE	1	-		0.900mm
060	15841-5335-0	PIEGE, DISTANCE	CALE DE BLOCAGE	DISTANZSCHEIBE	1	-		
070	11460-5328-0	NUT, NOZZLE	ECROU D'INJECTEUR	MUTTER	1	-		
080	11420-5331-0	CONNECTOR, INLET	CONNECTOR ORIFICE	VERBINDUNG, ZUFUHR	1	-		
090	14301-5338-0	WASHER	RONDELLE	SCHEIBE	1	-		
100	15841-9810-0	ASSY WASHER, ADJUST	ENS. RONDELLE	GRP. EINSTELLSCHEIBE	1	-		OPTION
110	15841-5323-0	WASHER, ADJUSTING	RONDELLE DE REGLAGE	EINSTELLSCHEIBE	1	-		0.900mm
110	15841-9851-0	WASHER, ADJUSTING	RONDELLE DE REGLAGE	EINSTELLSCHEIBE	1	-		0.825mm
110	15841-9852-0	WASHER, ADJUSTING	RONDELLE DE REGLAGE	EINSTELLSCHEIBE	1	-		0.850mm
110	15841-9853-0	WASHER, ADJUSTING	RONDELLE DE REGLAGE	EINSTELLSCHEIBE	1	-		0.975mm
110	15841-9854-0	WASHER, ADJUSTING	RONDELLE DE REGLAGE	EINSTELLSCHEIBE	1	-		1.000mm
110	15841-9855-0	WASHER, ADJUSTING	RONDELLE DE REGLAGE	EINSTELLSCHEIBE	1	-		1.025mm
110	15841-9856-0	WASHER, ADJUSTING	RONDELLE DE REGLAGE	EINSTELLSCHEIBE	1	-		1.050mm
110	15841-9857-0	WASHER, ADJUSTING	RONDELLE DE REGLAGE	EINSTELLSCHEIBE	1	-		1.075mm
110	15841-9858-0	WASHER, ADJUSTING	RONDELLE DE REGLAGE	EINSTELLSCHEIBE	1	-		1.100mm
110	15841-9859-0	WASHER, ADJUSTING	RONDELLE DE REGLAGE	EINSTELLSCHEIBE	1	-		1.125mm
110	15841-9860-0	WASHER, ADJUSTING	RONDELLE DE REGLAGE	EINSTELLSCHEIBE	1	-		1.150mm
110	15841-9861-0	WASHER, ADJUSTING	RONDELLE DE REGLAGE	EINSTELLSCHEIBE	1	-		1.175mm
110	15841-9862-0	WASHER, ADJUSTING	RONDELLE DE REGLAGE	EINSTELLSCHEIBE	1	-		1.200mm
110	15841-9863-0	WASHER, ADJUSTING	RONDELLE DE REGLAGE	EINSTELLSCHEIBE	1	-		1.225mm
110	15841-9864-0	WASHER, ADJUSTING	RONDELLE DE REGLAGE	EINSTELLSCHEIBE	1	-		1.250mm
110	15841-9865-0	WASHER, ADJUSTING	RONDELLE DE REGLAGE	EINSTELLSCHEIBE	1	-		1.275mm
110	15841-9866-0	WASHER, ADJUSTING	RONDELLE DE REGLAGE	EINSTELLSCHEIBE	1	-		1.300mm
110	15841-9867-0	WASHER, ADJUSTING	RONDELLE DE REGLAGE	EINSTELLSCHEIBE	1	-		1.325mm
110	15841-9868-0	WASHER, ADJUSTING	RONDELLE DE REGLAGE	EINSTELLSCHEIBE	1	-		1.350mm

↔ interchangeable; ≠ not interchangeable; ← new for old; → old for new

**0208 NOZZLE HOLDER (COMPONENT PARTS)  
INJECTEUR ET TUYAUTERIES (PARTIES COMPOSANTES)  
DUESENHALTER (EINZEL-TEIL)**



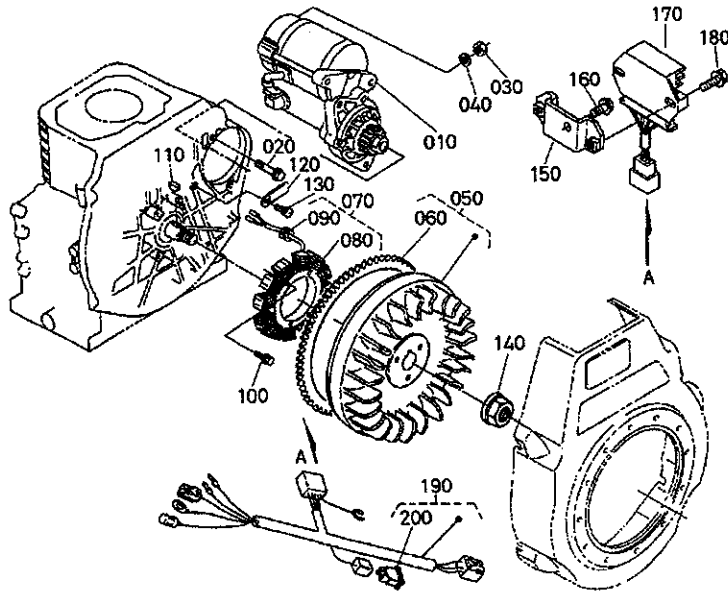
A:0C95-E2-D1-Q

REF. No. FIG. No. BILD-Nr.	PART No. REFERENCE BESELL-Nr.	PART NAME	DESIGNATION	BEZEICHNUNG	Q'TY/S. No. Q'TE/No. S. STUECK/S. Nr.		I. C.	REMARKS REMARQUES BEMERKUNGEN
					A	B		
110	15841-9869-0	WASHER, ADJUSTING	RONDELLE DE REGLAGE	EINSTELLSCHEIBE	1	-		1.375mm
110	15841-9870-0	WASHER, ADJUSTING	RONDELLE DE REGLAGE	EINSTELLSCHEIBE	1	-		1.400mm
110	15841-9871-0	WASHER, ADJUSTING	RONDELLE DE REGLAGE	EINSTELLSCHEIBE	1	-		1.425mm
110	15841-9872-0	WASHER, ADJUSTING	RONDELLE DE REGLAGE	EINSTELLSCHEIBE	1	-		1.450mm
110	15841-9873-0	WASHER, ADJUSTING	RONDELLE DE REGLAGE	EINSTELLSCHEIBE	1	-		1.475mm
110	15841-9874-0	WASHER, ADJUSTING	RONDELLE DE REGLAGE	EINSTELLSCHEIBE	1	-		1.500mm
110	15841-9875-0	WASHER, ADJUSTING	RONDELLE DE REGLAGE	EINSTELLSCHEIBE	1	-		1.525mm
110	15841-9876-0	WASHER, ADJUSTING	RONDELLE DE REGLAGE	EINSTELLSCHEIBE	1	-		1.550mm
110	15841-9877-0	WASHER, ADJUSTING	RONDELLE DE REGLAGE	EINSTELLSCHEIBE	1	-		1.575mm
110	15841-9878-0	WASHER, ADJUSTING	RONDELLE DE REGLAGE	EINSTELLSCHEIBE	1	-		1.600mm
110	15841-9879-0	WASHER, ADJUSTING	RONDELLE DE REGLAGE	EINSTELLSCHEIBE	1	-		1.625mm
110	15841-9880-0	WASHER, ADJUSTING	RONDELLE DE REGLAGE	EINSTELLSCHEIBE	1	-		1.650mm
110	15841-9881-0	WASHER, ADJUSTING	RONDELLE DE REGLAGE	EINSTELLSCHEIBE	1	-		1.675mm
110	15841-9882-0	WASHER, ADJUSTING	RONDELLE DE REGLAGE	EINSTELLSCHEIBE	1	-		1.700mm
110	15841-9883-0	WASHER, ADJUSTING	RONDELLE DE REGLAGE	EINSTELLSCHEIBE	1	-		1.725mm
110	15841-9884-0	WASHER, ADJUSTING	RONDELLE DE REGLAGE	EINSTELLSCHEIBE	1	-		1.750mm
110	15841-9885-0	WASHER, ADJUSTING	RONDELLE DE REGLAGE	EINSTELLSCHEIBE	1	-		1.775mm
110	15841-9886-0	WASHER, ADJUSTING	RONDELLE DE REGLAGE	EINSTELLSCHEIBE	1	-		1.800mm
110	15841-9887-0	WASHER, ADJUSTING	RONDELLE DE REGLAGE	EINSTELLSCHEIBE	1	-		1.825mm
110	15841-9888-0	WASHER, ADJUSTING	RONDELLE DE REGLAGE	EINSTELLSCHEIBE	1	-		1.850mm
110	15841-9889-0	WASHER, ADJUSTING	RONDELLE DE REGLAGE	EINSTELLSCHEIBE	1	-		1.875mm
110	15841-9890-0	WASHER, ADJUSTING	RONDELLE DE REGLAGE	EINSTELLSCHEIBE	1	-		1.900mm
110	15841-9891-0	WASHER, ADJUSTING	RONDELLE DE REGLAGE	EINSTELLSCHEIBE	1	-		1.925mm
110	15841-9892-0	WASHER, ADJUSTING	RONDELLE DE REGLAGE	EINSTELLSCHEIBE	1	-		1.950mm
120	15841-5362-2	GASKET	JOINT	DICHTUNGSPLATTE	1	-		#
130	19077-5365-0	SEAL HEAT	JOINT DE CHALEUR	DICHTUNG	1	-		#

↔ Interchangeable: ≠ not interchangeable: ← new for old: → old for new

0300

FLYWHEEL (D)  
VOLANT MOTEUR (D)  
SCHWUNGRAD (D)



1G161-004-10

A:0C95-E2-D1-Q

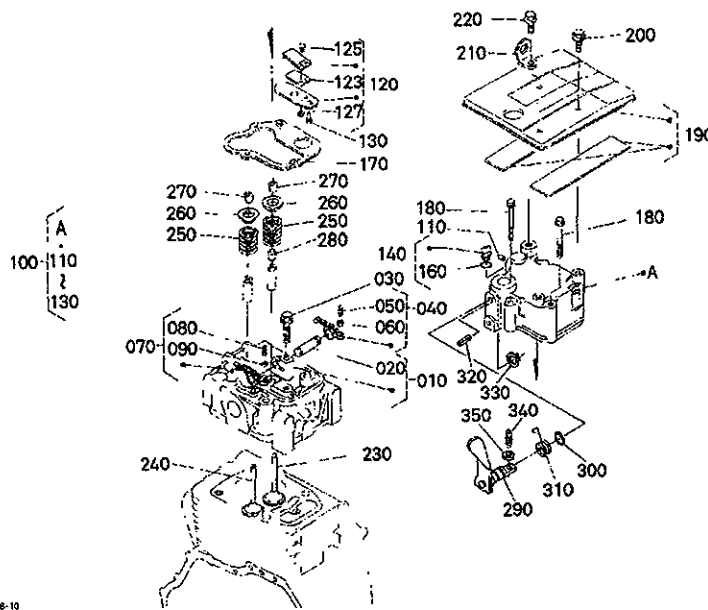
REF. No. POS. No. BILD-Nr.	PART No. REFERENCE BESELL-Nr.	PART NAME	DESIGNATION	BEZEICHNUNG	Q'TY/S. No. Q'TE. No. S. STUECK/S. Nr.		I. C.	REMARKS REMARQUES BEMERKUNGEN
					A	B		
010	11460-6301-2	ASSY STARTER	ENS. DEMARREUR	GRP. ANLASSER	1	-		
020	01754-50840	BOLT, FLANGE	VIS DE BUTEE	FLANSCHEN-BOLZEN	2	-		
030	02114-50080	NUT	ECROU	MUTTER	1	-		
040	04512-60080	WASHER, SPRING	RONDELLE GROWER	FEDERRING	1	-		
050	11460-6703-2	COMP. FLYWHEEL	VOLANT MOTEUR COMP.	KOMP. SCHWUNGRAD	1	-		
060	11460-6382-0	GEAR RING	COURONNE DE DEMARRE.	ZAHNKRANZ	1	-		
070	11420-6705-3	ASSY STATOR	ENS. STATOR	STATOR, ZUSAMMENBAU	1	-		
080	11420-6707-3	COIL	BOBINE	SPULE	1	-		
090	11420-6768-0	GROMMET	GRUMMET	GUMMITUELLE	1	-		
100	01754-50620	BOLT, FLANGE	VIS DE BUTEE	FLANSCHEN-BOLZEN	4	-		
110	12181-9525-0	KEY, WOODRUFF	CLAVETTE WOODRUFF	SCHLEIBEN-KEIL	1	-		
120	15241-6758-0	CLAMP, CORD	ATTACHE-FILS	KABELKLEMME	1	-		
130	01754-50610	BOLT, FLANGE	VIS DE BUTEE	FLANSCHEN-BOLZEN	1	-		
140	11460-2335-0	NUT, FLYWHEEL	EGROU VOLANT MOTEUR	SCHWUNGRADMUTTER	1	-		
150	11420-6461-0	STAY, REGULATOR	SUPPORT REGULATEUR	REGULATOR STANGE	1	-		
160	01754-50816	BOLT, FLANGE	VIS DE BUTEE	FLANSCHEN-BOLZEN	1	-		
170	11520-6460-0	ASSY REGULATOR	REGULATEUR	REGULATOR	1	-		
180	01754-50620	BOLT, FLANGE	VIS DE BUTEE	FLANSCHEN-BOLZEN	2	-		
190	11520-6575-0	WIRE HARNESS	HARNESS DE FIL	KABELGESCHIRR	1	-		
200	1G111-6572-0	FUSE	FUSIBLE	SICHERUNG	1	-		

↔ Interchangeable: ≠ not interchangeable: ← new for old: → old for new



0400

ROCKER ARM AND VALVE  
CULBUTEURS ET SOUPAPES  
KIPPEBEL UND VENTILE



16161-008-10

A:0C95-E2-D1-Q

REF. No. POS. No. BILD-Nr.	PART No. REFERENCE BESELL-Nr.	PART NAME	DESIGNATION	BEZEICHNUNG	QTY/S. No. QTE/No. S. STUECK/S. Nr.		I. C.	REMARKS REMARQUES BEMERKUNGEN
					A	B		
010	11460-1405-0	COMP BRACKET, R-ARM	SUPPORT, COMP.	HALTER KOMP.	1	-		
020	11460-1426-0	SHAFT, ROCKER ARM	ARBRE DE CULBUTEUR	KIPPEBELWELLE	1	-		
030	01754-50845	BOLT, FLANGE	VIS DE BUTEE	FLANSCHEN-BOLZEN	1	-		
040	11460-1402-0	ASSY ROCKER ARM, IN.	CULBUTEUR DE SOUPAPE	SCHWINGEBEL	1	-		
050	14601-1423-0	SCREW, ADJUSTING	VIS DE REGLAGE	STELLSCHRAUBE	1	-		
060	14601-1424-0	NUT	EGROU	MUTTER	1	-		
070	11460-1403-0	ASSY ROCKER ARM, EXH.	CULBUTEUR DE SOUPAPE	SCHWINGEBEL	1	-		
080	14601-1423-0	SCREW, ADJUSTING	VIS DE REGLAGE	STELLSCHRAUBE	1	-		
090	14601-1424-0	NUT	EGROU	MUTTER	1	-		
100	11460-1450-4	ASSY COVER, CYL. HEAD	ENS. COUVERCLE	ZYLINDERKOPFHAUBE	1	-		
110	15131-0138-0	PLUG, PIN	BOUCHON	STOEPELSTIFT	1	-		
120	11420-0501-2	ASSY BREATHER	ENS. RENIFLARD	ENTLUFTUNGSVENTIL	1	-		
123	14971-0521-0	VALVE, BREATHER	SOUPAPE DE RENIFLARD	VENTIL, ENTLUEFTER	1	-		
125	03024-50408	SCREW, WITH WASHER	VIS	SCHRAUBE	2	-		
127	02054-50040	NUT	EGROU	MUTTER	2	-		
130	03024-50510	SCREW, WITH WASHER	VIS	SCHRAUBE	2	-		
140	11420-3308-2	ASSY PLUG, OIL FILLER	ENS. VIS-BOUCHON	VERSCHLUB	1	-		
150		BLANK	BLANC	LEERE SPALTE	-	-		
160	04816-00180	O RING	JOINT TORIQUE	O RING	1	-		
170	11460-1452-2	GASKET, HEAD COVER NA	JOINT COUVRE-CULASSE	DICHTUNG, KOPFDECKEL	1	-		
180	01754-50860	BOLT, FLANGE	VIS DE BUTEE	FLANSCHEN-BOLZEN	3	-		
190	11460-3703-0	ASSY COVER, OIL COOL.	ENS. COUVERCLE	OEL KUEHLER-DECKEL	1	-		
200	01754-50610	BOLT, FLANGE	VIS DE BUTEE	FLANSCHEN-BOLZEN	2	-		
210	11811-0175-0	HOOK, ENGINE	ANNEAU DE LEVAGE	MOTOR-ANKERHAKEN	1	-		
220	01754-50825	BOLT, FLANGE	VIS DE BUTEE	FLANSCHEN-BOLZEN	1	-		
230	11486-1311-0	VALVE, INLET	SOUPAPE D'ADMISSION	EINLASSVENTIL	1	-		
240	11460-1312-0	VALVE, EXHAUST	SOUPAPE D'ECHAPMENT	AUSLASSVENTIL	1	-		
250	11460-1324-0	SPRING, VALVE	RESSORT DE SOUPAPE	VENTIL-FEDER	2	-		
260	16261-1333-0	RETAINER, SPRING	ARRETOIR DE RESSORT	HALTBUEGEL, FEDER	2	-		
270	15261-1336-0	COLLET, VALVE SPRING	DEMI CLAVETTE	KLEINMANSCHBE	2	-		SET

↔ Interchangeable: ≠ not interchangeable: ← new for old: → old for new









